

Bedienungsanleitung / Instruction manual /  
Mode d'emploi / Navodila za uporabo /  
Istruzioni per l'uso / Manual de utilizare /  
Návod k obsluze / Upute za uporabu /  
Kezelési útmutató / Návod na použitie /  
Ръководство за експлоатация / Kullanim kılavuzu /  
Instrukcja obsługi / Manual de instrucciones

# Steinbach

## Einhängekartuschenfilteranlage für Aufstellpools

- en** Hanging cartridge filter units for above ground pools
- fr** Système de filtration à cartouche à accrocher, pour piscines hors-sol
- it** Impianto con filtri a cartuccia per piscine fuori terra, predisposto per essere appeso
- es** Equipo de filtración por inmersión con cartuchos para piscinas no enterradas
- cs** Závěsná kartušová filtrace pro nadzemní bazény
- hu** Befüggeszhető szűrőbetétes szűrőberendezés, felállítható medencékhez
- sl** Obesni kartušni filter za sestavljive bazene
- sk** Závesné kartušové filtračné zariadenie pre montované bazény
- pl** Urządzenie filtrujące z wkładami do zawieszenia do basenów rozporowych i stelażowych
- ro** Instalație de filtrare cu cartuș, suspendată, pentru piscinele supraterane
- hr** Ovjescni filtarski uređaj s uloškom za montažne bazene
- bg** Окачващо се съоръжение с касетъчен филтър за изправящи се басейни
- tr** Kurulu havuzlar için askı kartuşlu filtre tertibatı



**pool**zubehör



Abbildung 1 / Illustration 1

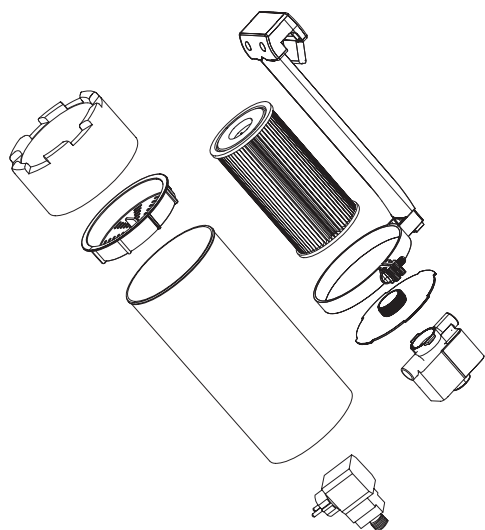
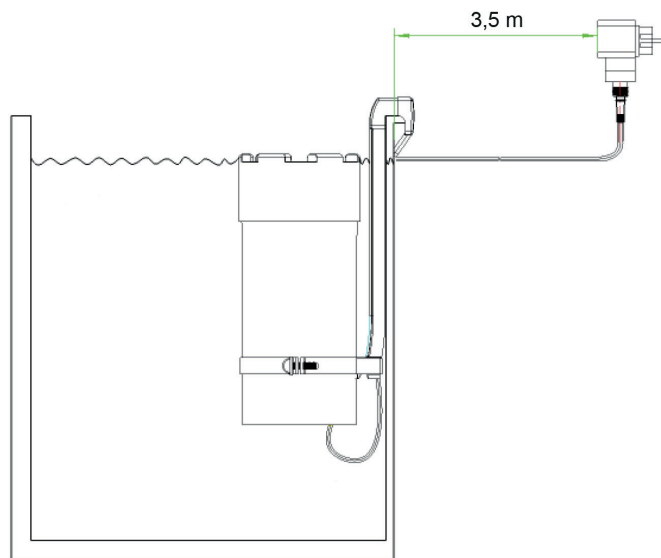
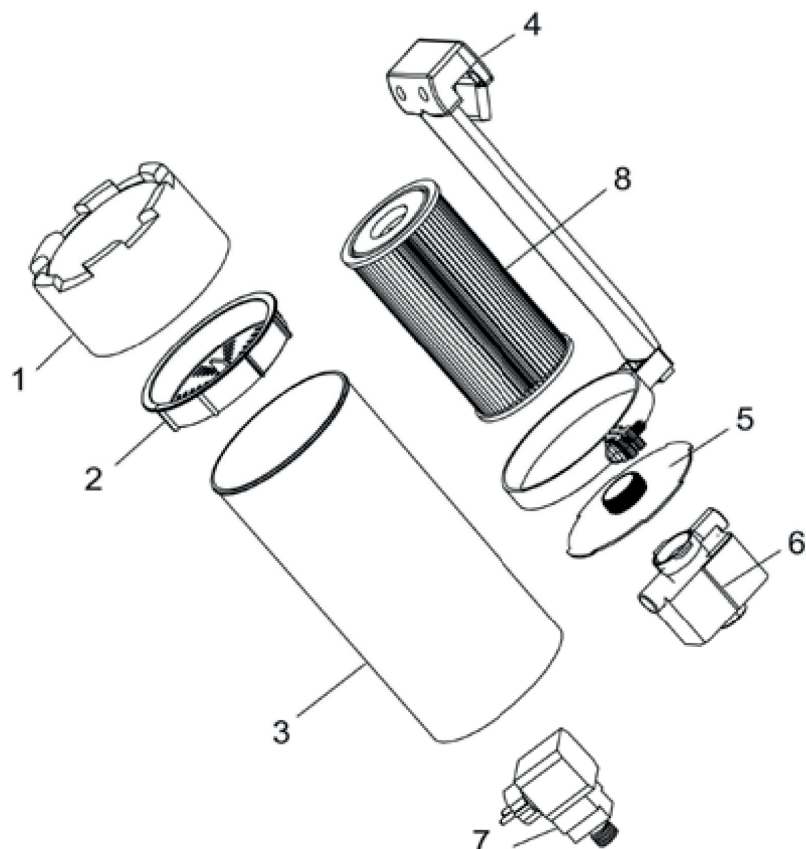


Abbildung 2 / Illustration 2



Ersatzteile (Abbildung E1 / L1) /  
Spare Parts (Illustration E1 / L1)

040590\_ET\_Skizze\_2018



Nr.	040590
1	040594
2	040595
3	040596
4	040591
5	040592
6	040593
7	040597
8	060225



## Preface

Many thanks for purchasing this Steinbach product. We continually develop and enhance our items, however, should this product be faulty, we apologise for any inconvenience and politely ask you to get in contact with our service centre.

## Read operating manual and store safely

### Instruction manual for Hanging cartridge filter units for above ground pools

This instruction manual relates to the product stated above. It contains important information on starting your product for the first time and how to operate it. Carefully read through the instruction manual - particularly the safety instructions - before using this product. Non-compliance with this instruction manual may lead to major injuries or damage to your product. The instruction manual is based on standards and regulations applicable within the European Union. If the product is being used abroad, please follow any country-specific guidelines and laws. Store the instruction manual in a safe location for later consultation and submission to third parties, where applicable.

## Intended use

This product is solely intended for private use and is not suitable for commercial use.

The hanging cartridge filter unit with integrated surface suction and inlet is suitable for all above ground pools. It is used to filter and circulate the water of above ground swimming pools. Only use the product as described in this instruction manual. Any other use is considered improper use and may lead to personal injury or damage to property. This item is not a toy. The manufacturer or retailer assumes no liability for damage resulting from improper or incorrect use.



## Warnings and safety instructions

**Read and observe all instructions. Non-compliance with these warnings and instructions may result in damage to property, severe personal injury or even death. These product warnings, instructions and safety regulations are extensive but cannot cover all potential risks and dangers and are thus not to be considered exhaustive. Please be cautious and assess potential dangers appropriately. Incorrect use/handling of the product can lead to life-threatening situations.**

**Caution! Leave repairs to experts in order to prevent hazards. Consult a specialist workshop. Liability is waived and warranty claims expire if repairs are carried out independently of if the product is improperly installed or used incorrectly. Only original parts corresponding to the original product specifications may be used during repairs.**

**WARNING! Hazardous for children and persons with reduced physical, sensory or mental abilities (such as the handicapped, elderly individuals with impaired physical and mental abilities), or those with a lack of experience and knowledge. Children must not be allowed to play with this product. Cleaning may not be performed by children and persons with reduced physical, sensory or mental abilities.**

**NOTE! Risk of damage! This product may be damaged through improper use.**

**Danger of electrocution! Faulty electrical installation or too high mains voltage can lead to electrocution. Only connect the product if the mains voltage on the socket corresponds to the technical specifications. Only connect this product using an easily accessible socket to ensure it can be rapidly disconnected from the mains in the event of a fault. Do not operate the product if it exhibits visible damage or the mains cable/plug is defective. As additional protection, it is recommended to install a residual current device (FI/RCD) with a tripping current of no more than 30 mA. Consult with an electrician for advice.**

**Only open the product as described in this manual. Leave repairs to experts in order to prevent hazards. Consult a specialist workshop. Liability is waived and warranty claims expire if repairs or changes to the product are carried out independently of if the product is improperly connected or operated incorrectly. This product**

**features electrical and mechanical parts which are indispensable for protecting against potential hazards.**

**Never touch the plug with wet hands. Never pull out the plug from the socket using the cable - always pull on the plug. Keep the product, plug and all cables away from open fires and hot surfaces. Lay the cable so that it does not pose a tripping risk and do not place it under the ground. Lay cables in such a way that they will not be damaged by lawn mowers and other similar devices. Do not kink the cable and do not lay it over sharp edges. Do not use an extension cable, multiple socket adapters or other adapters.**

**Your cartridge filter has been thoroughly test-ed after production and left the factory in technically perfect condition. In order to maintain this condition and to ensure safe functioning, the user should observe all the recommendations given in these instructions at all times. If there are any signs that safe operation of the cartridge filter may no longer be guaranteed, the system is to be disconnected from the electricity supply immediately and secured against unintentional switching on again. This is the case:**

- if the device shows visible damage.
- if the device appears to be no longer functioning correctly.

(Picture 2)

**Do not use the pump if there is no water in the pool. Before the filter pump is started up, please check that all cables and the plug are in perfect condition. Voltage and frequency must comply with those stated. The transformer must be kept at a distance of at least 3.5 metres from the pool. The transformer, cable and plug must be kept dry. Before servicing the pump and cleaning the particle filter, make sure that the transformer has been disconnected from the electricity supply. If the power cable is damaged, the pump must not be used. If the connecting cable on this device is damaged, it must be replaced by the manufacturer or his After-Sales Service or a similarly qualified person in order to avoid hazards. Do not lift or move the pump by pulling on the power cable.**



## Check scope of delivery

**NOTE! Risk of damage! The product may be damaged if you open the packaging with a sharp knife or other sharp objects without due care and attention. Please open the packaging very carefully.**

- Remove the product from the packaging.
- Check that all included items have been delivered in full. Sketch/photo L1.
- Check whether the item, or parts thereof, exhibit damage. If there is damage, do not use the product. Get in contact with the service address stated at the end of the manual.



## Set-Up Diagram (Picture 1)

**Note:** The cartridge filter can be adjusted in height. The extension rod and clamp are fixed in place with a flat-head, star-drive screw and a hexagon nut to avoid the device floating to the surface in the pool.



## Using for the first time

**Caution:** never let the pump run dry; this leads to damage.

- Submerge the filter pump completely in the water and ensure that the pump is filled with water.
- In order to avoid the pump sucking air, submerge the pump at least 15 cm below water level.
- The water temperature must not be above 35°C.
- During winter avoid the pump becoming frozen.
- The pump switches on immediately after plugging the transformer into the socket.



## Troubleshooting

Problem	Cause	Possible remedy
Motor does not run	No electricity	Check electricity source, switch and wiring (have them repaired or re-placed by professionals)
	Impeller is blocked	Dismantle pump and clean
	Windings burnt out	Replace pump
Motor runs but little or no water is drawn in	Pump is not fully submerged in water	Raise water level or lower pump
	Impeller damaged	Clean filter insert
	Rotor turns in the wrong direction	Switch transformer off and then back on again
Motor runs intermittently	Impeller is blocked or is permanently overloaded	Clean cartridge and protect transformer against overheating.

## Important Note

### Technical Data

- Model Suspended/Wall-mounted cartridge filter for set-up pools
- Nominal voltage 12 VAC (50HZ)
- Filter volume 2,8 l
- Flow rate 1.700 l/h
- Pool volume 8.000 l
- Output (W) 20
- Max. Watertemp. °C 35
- Max. depth below water (m) 0,5
- Transformer SG12 20,4 W, 230 V 50 Hz,
- 12 VAC 1700MA 20,4 VA

### Cleaning

Use conventional cleaning products. Do not use solvent-based or abrasive cleaning agents/tools, i.e. no hard sponges, brushes etc..

### Storage

The product must be thoroughly dried after cleaning. After which, it is to be stored in a dry location protected from frost.

### Disposal

**Disposing of packaging:** The packaging material has been selected in view of environmental concerns and disposability and is therefore recyclable. The paper and cardboard can be recycled, as can the plastic coverings.

**Disposing of the product:** Applicable in the European Union and other European states with systems in place for collecting and sorting recyclable materials. Dispose of the product in accordance with any laws and regulations applicable at your place of residence.

### Warranty conditions

The respective country's legal provisions for warranty conditions shall apply accordingly.

### Declaration of conformity (CE)

The EU declaration of conformity can be requested via the address shown at the end of this manual.