

Originalbetriebsanleitung / Original owner's manual / Notice originale / Istruzioni originali / Manual original / Původní návod k používání / Eredeti használati utasítás / Izvirna navodila / Pôvodný návod na použitie / Instrukcija oryginalna / Instrucțiuni originale / Originalne upute / Оригинална инструкция / Orijinal kullanim talimatları

Filteranlage

Comfort 50

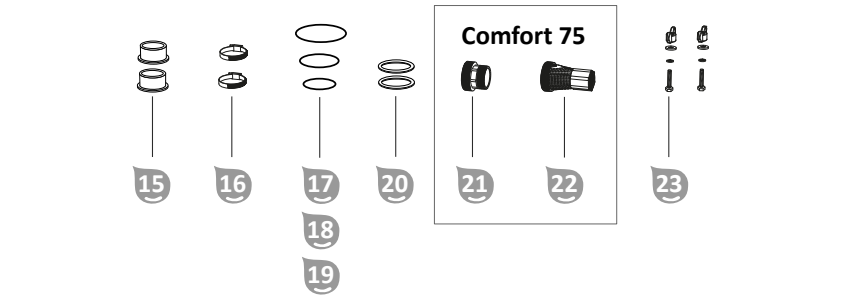
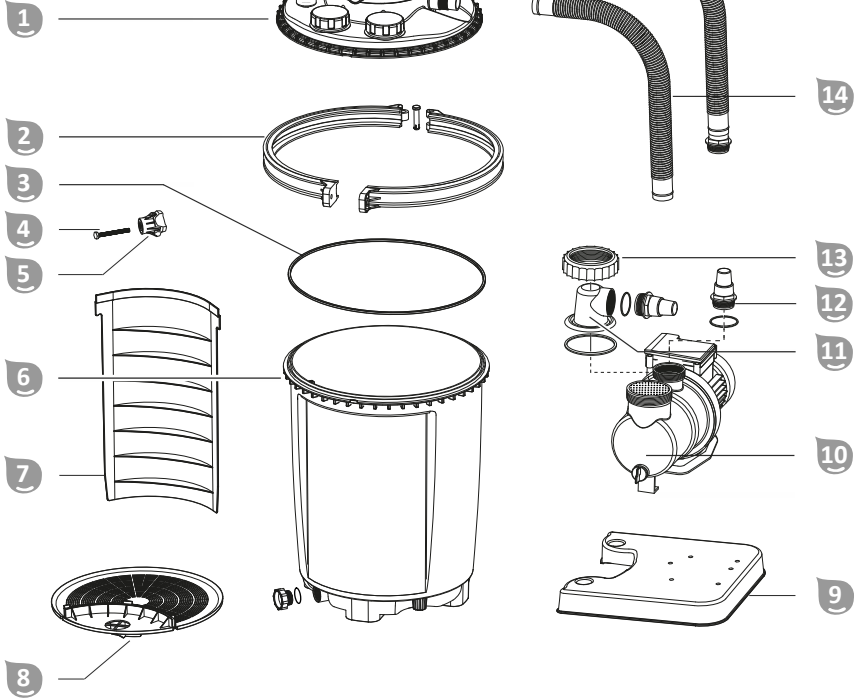
Comfort 75

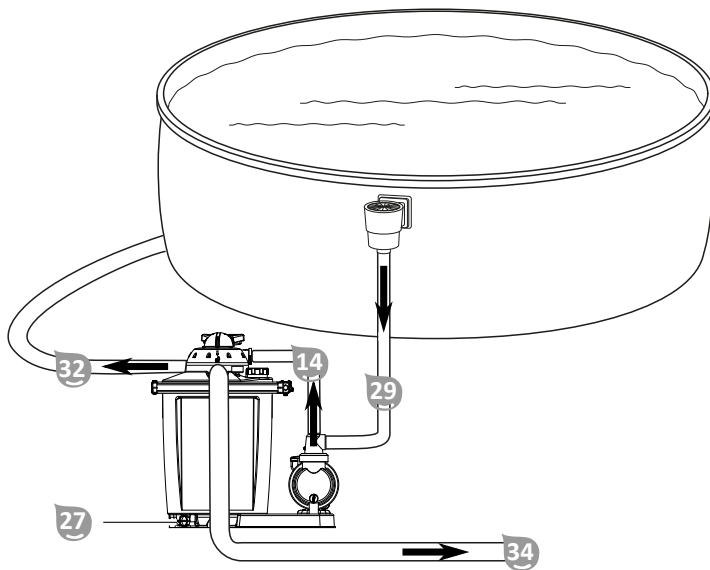
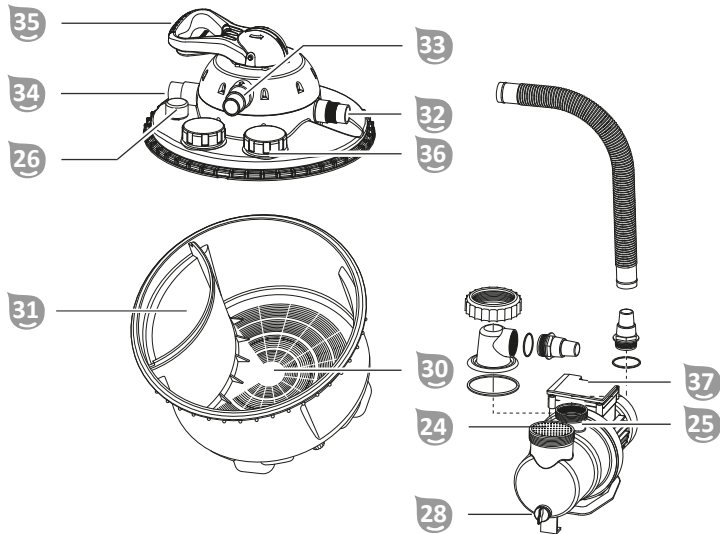


de	Filteranlage.....	5	en	Filter system.....	27
fr	Système de filtration.....	48	it	Impianto filtro.....	70
es	Instalación de filtrado.....	92	cs	Filtrační zařízení.....	114
hu	Szűrő berendezés.....	135	sl	Filtrska naprava.....	157
sk	Filtračné zariadenie.....	178	pl	Urządzenie filtrujące.....	200
ro	Instalație de filtrare.....	222	hr/bs	Sustav filtriranja.....	244
bg	Филтърна система.....	266	tr	Filtre sistemi.....	290

Comfort 50

Comfort 75



A**B**

Package contents

- 1 Valve head
- 2 Locking ring
- 3 Filter vessel gasket
- 4 Locking ring bolt
- 5 Wing nut
- 6 Filter vessel
- 7 Divider
- 8 Screen
- 9 Base plate
- 10 Pump
- 11 Prefilter cover
- 12 Hose adapter (2x)
- 13 Threaded ring
- 14 Pressure hose
- 15 Hose reducer (2x)
- 16 Hose clamp (2x)
- 17 O-ring seal, large (Ø 79 mm)
- 18 O-ring seal, medium (Ø 54 mm)
- 19 O-ring seal, small (Ø 45 mm)
- 20 Flat gasket for inlet and outlet hose (2x)
- 21 Adapter INTEX suction line (Art. 040933)
- 22 Adapter INTEX return line (Art. 040934)
- 23 Fastening kit for filter pumps (2x)
 - Teflon tape (not shown)
 - Instruction manual (not shown)

Components

- 24 Prefilter
- 25 Connection pump/pressure line
- 26 Manometer
- 27 Drainage opening
- 28 Drain screw
- 29 Suction line
- 30 Filter chamber
- 31 Clean water chamber
- 32 Connection return line
- 33 Connection pressure line
- 34 Connection backflush line
- 35 Valve lever
- 36 Sight glass (screw top)
- 37 Timer

Optionally available accessories

- 38 Adapter for INTEX pools
2" x 1 1/2" AG (suction line)
item no. 040933
- 39 Adapter for INTEX pool
2" AG x 1" IG (return line)
item no. 040934
- 40 UV disinfection system
(for screwing into the valve head)
item no. 040511

Contents

Overview	2
Package contents	26
General Information	28
Explanation of Symbols	28
Safety	28
General safety instructions.....	29
Unpacking and checking the package contents	30
Preparation	30
Choosing the location.....	30
Filter shaft.....	31
Description of the filter system	31
Modes of the filter system.....	31
Function principle of the timer.....	32
Filtering time.....	32
Before First Use	32
Check the following before start-up.....	33
Initial start-up of the timer.....	33
Preparing the pump.....	33
Mounting the pump on the base plate.....	33
Preparing the filter vessel.....	34
Fitting the line connections.....	34
Connecting the lines.....	35
Preparing the filter system.....	36
Operation	36
Selecting the mode.....	36
Pump operation.....	36
Care instructions.....	37
Maintenance	37
Backflushing.....	37
Exchanging the filter medium.....	37
Replacing the timer battery.....	38
Cleaning	38
Test	38
Storage	39
Winter storage.....	39
Troubleshooting	40
Technical data	41
Spare parts	42
Disposal	45

General Information

Read and keep the operating instructions



These operating instructions are a part of this filter system (in the following also called "device"). It contains important information about start-up and operation.

Read the operating instructions and especially the safety instructions carefully before using the device. Non-observance of these operating instructions can lead to severe injuries or damage to the device.

Keep the operating instructions for further use. If you pass on the device to a third party, you must pass on these operating instructions as well.

Intended use

This device has been designed exclusively for cleaning pool water. It can be used in salt water as long as the salt content of the water is less than 0.5% (salt electrolysis). It removes visible dirt and is suited for all standard pools with a hose connection of \varnothing 32/38 mm.

The filter medium in the filter tank filters dirt particles out of the flowing water and serves as permanent dirt and floating debris filter for your pool water. The cleaned water flows back into the pool via the 7-way valve and the return line.

Use exclusively quartz filter sand that meets the DIN EN 12904 directive as filter medium. Alternatively, use Steinbach Filter Balls. Please refer to the section "Technical data" for the required quantities.

This product is exclusively intended for private use and not suited for the commercial sector. Only use the device as described in these operating instructions. Any other use is considered inappropriate and may lead to material damage or even injury. The device is not a toy.

The manufacturer or retailer will not assume any liability for damage caused by inappropriate or incorrect use.

Explanation of Symbols

The following symbols are used in these operating instructions, on the device or on the packaging.



Here you will find useful additional information.



Risk of damage!
Do not open the packaging with sharp or pointed objects, such as cutters.

Safety

The following signal words are used in these operating instructions.



This signal symbol/word denotes a hazard with an average risk level that could lead to death or severe injury if it is not avoided.



This signal symbol/word denotes a hazard with a low risk level that could lead to mild or moderate injury if it is not avoided.



This signal word provides a warning about potential material damage.

General safety instructions



Risk of electric shock!

Faulty electric installation or excess mains voltage can cause an electric shock.

- Only connect the power cable if the mains voltage of the socket matches that on the type plate.
- Only connect the power cable to an easily accessible socket so that you can quickly disconnect it in the case of a fault.
- Operate the device only at an outlet with a protective contact and a fuse with max. 16A.
- The device must be powered via a residual current device with a rated residual current of at most 30 mA.
- Do not operate the device if it has visible damage or if the power cable/the power plug is defective.
- Do not open the device; leave repairs to an expert. Contact the service address on the back of the instruction manual for this purpose. All liability and warranty claims will be void in the case of arbitrary repairs, improper connection or wrong operation.
- Never touch the power cable with wet hands.
- Never pull the power cable out of the socket by the cable; always hold it by the plug.
- Never use the power cable as a carrier handle.
- Keep the device and the power cable away from naked flames and hot surfaces.
- Do not place any objects on the power cable.
- Do not bury the power cable.
- Route the power cable such that no one can trip over it.
- Do not kink the power cable and do not place it over sharp edges.
- Only use extension lines, if required, that are also suitable for outdoor use. Using an extension line that is suited for outdoor use reduces the risk of electric shock.
- Do not use the device during a thunderstorm. Switch it off and pull the power cable out of the socket.
- Always switch off the device and disconnect it from the power supply if you are not using the device, when cleaning it or in the case of a fault.
- Only components that meet the original device data must be used for repair. There are electric and mechanical components in this device that are indispensable for hazard protection.
- Only use spare parts and accessory parts supplied or recommended by the manufacturer. All warranty claims will be void when using third-party components.

Safety instructions for persons



Danger to children and persons with reduced physical, sensory or mental capacities (such as partially disabled persons/older persons with reduced physical and mental capacities) or persons lacking experience and knowledge (such as older children).

Improper handling of the device can lead to severe injury or damage to the device.

- Only allow others to access the device after they have read and comprehended the entire manual or have been instructed about the intended use and the associated risks.
- Never let persons with reduced physical, sensory or mental capacities (such as children or drunk people) or a lack of experience and knowledge unsupervised near the device.
- Never allow children and persons with limited physical, sensory or mental capacities or persons lacking the respective experience and knowledge to operate the device.
- Do not let children clean or service the device.
- Children are not allowed to play with the device or with the power cable.

- Install the filter system at a sufficient distance to the pool wall so that it cannot be used as an aid for entering the pool.

 **WARNING!**

Risk of injury through insufficient qualification!

Insufficient experience or skills for handling the required tools and insufficient knowledge of regional or normative regulations for the required work can lead to severe injuries or material damage.

- Assign all work whose risks you cannot estimate due to insufficient personal experience to a qualified expert.
- Do not operate the device when impaired (e.g. under the influence of drugs, alcohol or medication).

NOTICE!

Improper handling of the device can damage the device.

- Select a location for the device that is protected from the weather.
- Install the filter system at a sufficient distance to the pool wall so that it cannot be used as an aid for entering the pool.
- Ensure sufficient air exchange to prevent overheating of the motor.
- Do not let the device run dry (without water).
- Only use the supplied pump that matches your device.
- Before switching anything on the valve head, turn the filter pump off.
- Never place the device or parts of it in the pool.
- Never use flocculants in your pool water. They can cause the filter balls to clump together.

Unpacking and checking the package contents

 **WARNING!**

Packaging materials pose a risk of suffocation!

Catching your head in the packaging foil or swallowing other packaging materials can cause death. There is a higher risk for children and mentally challenged persons who cannot estimate the hazard potential due to lack of knowledge and experience.

- Prevent children and mentally challenged persons from playing with the packaging materials.

Preparation

Choosing the location

The following requirements must be met or considered:

- Position the filter system between the suction connection and the injection nozzle with sufficient distance to the pool wall so that the filter system cannot be used to climb into the pool
- Position the pump below the water level
- Maximum 3 m distance to the pool
- Stable, sturdy and horizontal surface, for example a concrete slab

Filter shaft



A filter shaft is required if the pool is partially or entirely installed in the ground so you can place the pump of the filter system below the pool's water level.

- Make sure that the filter shaft cannot be flooded and that ambient and rainwater can drain away easily.

You can do so by installing a gravel layer at the bottom of the shaft. An optional immersion pump with a float switch that is connected to a canal or drain additionally protects your filter system from rising water inside the shaft.

- Ensure sufficient natural ventilation of the shaft to prevent condensation.
- Design the size of the filter shaft so that you can carry out work on the filter system.

Description of the filter system

Modes of the filter system

Your filter system has several modes. They are indicated by numbers on the valve head.

1. Filter
2. Rinse
3. Circulate
4. Backflush
5. Closed
6. Drain
7. Winter

The individual modes are described below.

FILTER

Use this mode as the basic setting of your filter system.

The sucked-in pool water flows into the filter vessel through the top and flows through the filter medium. Dirt is filtered out in the process and the water is returned to the pool afterwards.

RINSE

Let the pump run for 20 to 30 seconds in this mode right after backwashing, refilling the quartz filter sand or after initial start-up.

The water is guided into the top part of the filter vessel and the valve head is rinsed. The water drains via the dirt line. The valve head is cleaned this way.

RECIRCULATE

Run this mode after treating the water with chemicals.

The water is guided directly from the valve head to the pool without flowing through the filter. The filter medium does not come into contact with the applied chemicals this way.

BACKWASH

Do not backwash when using Steinbach Filter Balls. If the filter throughput decreases, we recommend washing the filter balls by hand. If necessary, exchange the filter balls.

Let the pump run in this mode for at most 2 minutes if starting it up for the first time or if new quartz filter sand was filled in, or if the manometer shows 0.3 to 0.6 bar above the normal operating pressure to clean the filter and the quartz filter sand.

The water is guided into the bottom part of the filter vessel and flows through the entire filter. Collected dirt is detached and flushed out via the backwash line.

CLOSED

NOTICE!

- Never switch on the pump in this mode!

Use this mode to clean the prefilter (if available) or checking the system for leaks and sealing the affected spots.

The water flow in the pump and in the filter is blocked. Make sure that feed and drain hoses are filled with water and might have to be closed off with shut-off valves or plugs.

WASTE

NOTICE!

- The pool can only be drained up to the minimum water level at the height of the suction line. Make sure to switch the pump off once this level is reached to prevent the pump from running dry.

Use this mode to clean the pool in the case of heavy soiling.

The water is guided past the filter and discharged directly via the backwash line.

WINTER

NOTICE!

- Never switch on the pump in this mode!

Use this mode to store the filter system in the winter.

The valve lever is in an intermediate position which relieves the inner valve components.

Function principle of the timer

With the integrated timer, you can start and stop the pump automatically once a day for the set time. To set several intervals within a 24-hour period, you need an external timer.

The timer has a battery (see section "Technical data"). The start time and the running time are saved in case the power supply is interrupted or fails altogether.

Filtering time

The pool's water content should be circulated at least twice in a 24 h period. In case of heavier frequency, the pool water should be circulated 3 to 5 times per day.

Before First Use

WARNING!

Risk of death when operating the water treatment system during bathing.

Hair or clothing might get sucked into the suction openings of the pool and in extreme cases trap persons under water and prevent them from surfacing again.

- Never operate water treatment system devices while persons are in the pool.
- Prevent any access to the pool for as long as water treatment system devices are in use.

NOTICE!

Clarifying agents in the pool water can lead to clumping of the Active Balls and severely impair their cleaning effect.

- Do not use any clarifying agents for water treatment when using Active Balls as filter medium.

Check the following before start-up

- The device is out of the pool and the power cable is disconnected from the mains

Initial start-up of the timer

The timer is going to function flawlessly even if you do not perform the steps described below. However, should the power supply be interrupted, the saved filter running times will be lost.

1. Make sure that the pump's power cable is disconnected from the power supply.
2. With a Phillips screwdriver PH1, remove the screws of the timer cover and take the cover off.
3. Pull out the strip of plastic from underneath the battery.
4. Screw the cover back on.

The timer's memory backup function is activated.

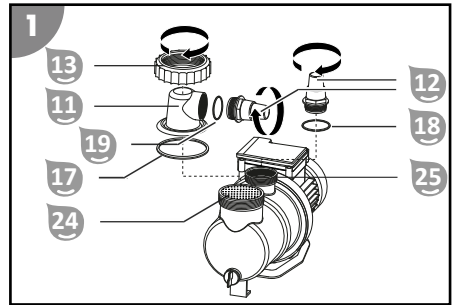
Preparing the pump

At the time of delivery, the pump is only partially assembled.



Only hand-tighten all screw connections. Excessive tightening of the screw connections damages gaskets and plastic components. Do not use any tools. You can use Teflon tape to seal screw connections with minor leakage.

1. Loosen the threaded ring **13** on the prefilter cover **11** by turning it counterclockwise.
2. Lift the prefilter cover **11** with the threaded ring off the pump housing.
3. Insert the large O-ring seal **17** into the groove on the pump housing.
4. Insert the prefilter **24** into the pump. The prefilter is already inserted into the pump at the factory.
5. Place the prefilter cover **11** on the pump housing.
6. Guide the threaded ring over the prefilter cover.
7. Turn the threaded ring clockwise until it is hand-tight.
8. Insert the small O-ring seal **19** into the prefilter cover.
9. Screw the hose connection clockwise into the prefilter cover until it is hand-tight.
10. Place the medium O-ring seal **18** into the recess of the pump outlet **25**.
11. Screw a hose adapter **12** clockwise into the pump outlet until hand-tight.



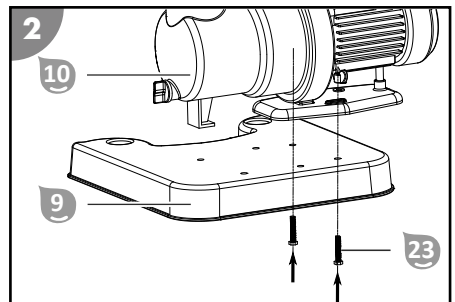
The Comfort 50 filter system has the hose adapter assembled on the pressure hose.

The pump is ready for operation. You can now connect it to the lines.

Mounting the pump on the base plate

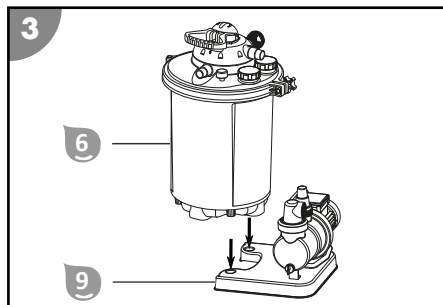
1. Push the threaded screws of the fastening kit for filter pumps **23** from below into the base plate **9** (into the two hexagon sockets).
2. Place the pump **10** on the base plate **9** so that the threads protrude through the fastening opening in the pump base.
3. Push the washer and then the serrated lock washer over the screw thread.
4. Put on one winged screw each and tighten it.

The pump is mounted on the base plate.

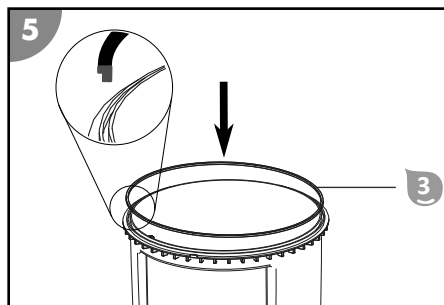
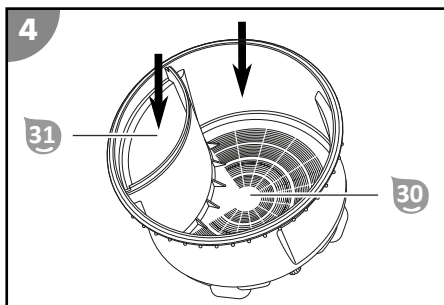


- Connect the base plate **9** to the filter vessel **6**.

The base plate is connected to the filter vessel.

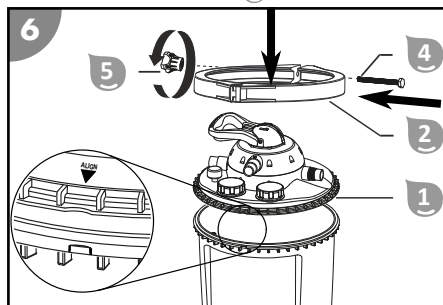


Preparing the filter vessel



- Fill the filter vessel **31** approximately 1/3 with water.
- Fill the filter chamber **30** with filter medium.
- Please refer to the section "Technical data" for the required quantities. Make sure that no filter medium gets into the clean water chamber **31**.
- Clean any foreign objects and dirt from the groove and insert the vessel seal **3**.
- Align the notch on the outer edge of the valve head **1** with the adjustment lug of the filter vessel.
- Place the locking ring **2** around the valve head and filter vessel connecting point. Make sure that the joint of the locking ring is located at the connection point with the arrow marking "ALIGN" on the valve head **1**.
- Insert the locking ring bolt **4** into the hexagon socket of the locking ring.
- Pass the locking ring bolt through the hole on the opposite side of the clamping ring.
- Place the wing nut **5** onto the thread and turn it clockwise to tighten it.

The filter vessel is prepared.



Fitting the line connections



Some hoses, such as the pressure hose, are very stiff. Place them in the sun before use so that the heat makes them more flexible.



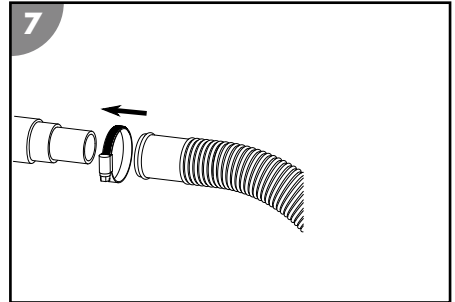
Only hand-tighten all screw connections. Excessive tightening of the screw connections damages gaskets and plastic components.

Use suitable pool hoses \varnothing 32 / 38 mm for the described connections. Other pool hoses (such as INTEX with threaded connection) require additional adapters. For the matching adapters, visit our web shop at: www.steinbach-group.com

To connect a swimming pool hose to the pump or filter vessel, proceed as follows:

1. Guide a hose clamp over the hose.
2. Push the hose onto the hose connection.
3. Fix the hose clamp on the hose connection using a Phillips screwdriver PH1.

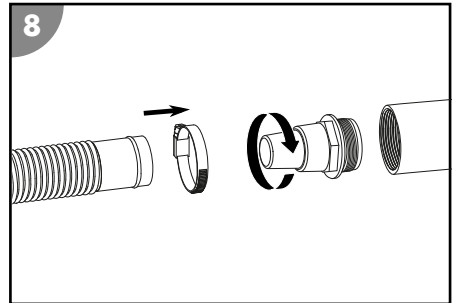
The swimming pool hose is connected.



To connect a swimming pool hose to the hose adapter of the pump or filter vessel, proceed as follows:

1. Screw the hose adapter into the connection thread.
2. Guide a hose clamp over the hose.
3. Push the hose onto the hose adapter.
4. Fix the hose clamp on the hose adapter using a PH 1 Phillips screwdriver.

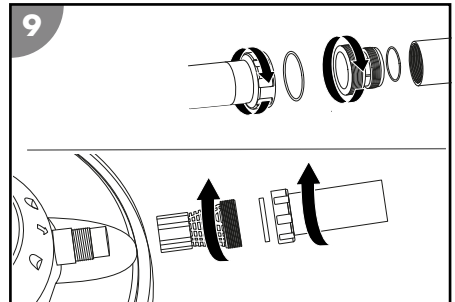
The swimming pool hose is connected to the hose adapter.



To screw an INTEX swimming pool hose (not included in the package contents) onto the pump or filter vessel, proceed as follows:

1. Screw the adapter for INTEX pools or the return line adapter for INTEX pools into the connection thread.
2. Screw the hose onto the adapter.

The INTEX swimming pool hose is connected.



Connecting the lines

Prepare the following components:

- Pressure line
- Return, backflush and suction line (not included in the package contents)
- Assembly materials for the lines

To connect the lines to the pump and filter vessel (see Figure A), proceed as follows:

1. Route the return and suction line from the pool to the filter system.

- Route the backflush line from the duct connection to the filter system.
Observe the markings right at the line connections of the valve head.

The lines are connected.

Preparing the filter system

- Press and hold down the valve lever **35** on the valve head **1**.
- Set the valve lever to the "RÜCKSPÜLEN" (BACKFLUSH) position and release it.
- Allow the filter vessel **6** to fill with water until the water runs out of the "WASTE" **34** backflush line.
- Check the filter system and the connections for leaks.
- Backflush the system (see section "Backflushing").

Operation

WARNING!

Risk of death when operating the water treatment system during bathing.

Hair or clothing might get sucked into the suction openings of the pool and in extreme cases trap persons under water and prevent them from surfacing again.

- Never operate water treatment system devices while persons are in the pool.
- Prevent any access to the pool for as long as water treatment system devices are in use.

CAUTION!

Risk of injury!

A damaged device or damaged accessories may cause injuries.

- Check the device and the accessories (see section "Testing").

NOTICE!

Clarifying agents in the pool water can lead to clumping of the Active Balls and severely impair their cleaning effect.

- Do not use any clarifying agents for water treatment when using Active Balls as filter medium.

Selecting the mode

Switch the pump **10** off by pulling the power plug.

Press and hold down the valve lever **35** on the valve head **1**. Turn the valve lever to the desired position and let go.

Pump operation

- Make sure that all hoses and pipes are correctly connected and that the water level in the pool is at least 1 to 2" (2.5 to 5 cm) above the opening of the suction line.
- Check the valve setting of your filter system before you activate the pump.
- Connect the pump's power plug to the power supply.

The running time display blinks (if a battery is inserted, the last selected running time is displayed).

- Press the timer button **37** several times until the LED of the desired running time is lit.
- Switch on the pump **10** by pressing the ON/OFF button on the timer **37**.
The pump starts running at this time and deactivates itself automatically once the selected running time has expired. The timer activates the pump every day at the same time for the same running time (once every 24 hours).

The pump is running.

6. Check the pump for unusual noises.
If there is air in the system, bleed it again.
7. Press the ON/OFF button on the timer **37** to manually stop the pump operation.
Manual stopping the pump deactivates the timer.
The pump is switched off.

Care instructions

The filter system cannot filter out algae, bacteria and other microorganisms.

- Use special water care substances to prevent and remove these to ensure hygienically clean water.
- Consult an expert and observe the dosage.

Maintenance

Backflushing

Backflushing regenerates the filter and the filter sand. The filter sand must be cleaned prior to the initial start-up and in regular intervals while in use.



Do not backwash when using Steinbach Filter Balls. If the filter throughput decreases, we recommend washing the filter balls by hand. If necessary, exchange the filter balls.

1. Switch off the pump **10** by pressing the ON/OFF button on the timer **37**.
2. Connect the backwash line (see section "Connecting the backwash line").
3. Press and hold down the valve lever **35** on the valve head **1**.
4. Set the valve lever to the "RÜCKSPÜLEN" (BACKFLUSH) position and release it.

The level engages at the "Rückspülen" (Backflush) position.

5. Switch on the pump **10** by pressing the ON/OFF button on the timer **37**.
6. Backwash the system until clean water emerges from the backwash line (max. 2 minutes).
7. Switch off the pump **10** by pressing the ON/OFF button on the timer **37**.
8. Press and hold down the valve lever **35** on the valve head **1**.
9. Set the valve lever to the "NACHSPÜLEN" (RINSE) position and release it.

The level engages at the "Nachspülen" (Rinse) position.

10. Switch on the pump **10** by pressing the ON/OFF button on the timer **37**.
11. Let the pump run for 20 to 30 seconds to remove any residue in the valve head.
12. Switch off the pump **10** by pressing the ON/OFF button on the timer **37**.
The valve head is still in the "Nachspülen" (Rinse). Make sure that to set the valve head to the desired position, e. g., "Filtern" (Filter), after reactivating the pump.



The backwashing is completed.

Exchanging the filter medium

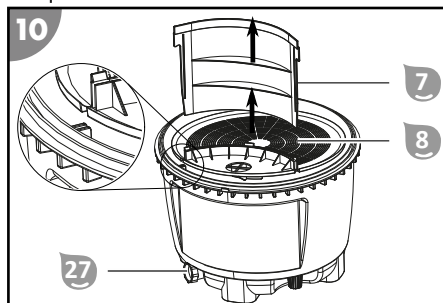


The filter medium used (quartz filter sand or Steinbach filter balls) should be exchanged every 2 to 3 years, depending on the operating period and the amount of dirt on the device.

1. Switch the pump **10** off by pulling the power plug.
2. Close the shut-off valves or block the water flow to the pool's connecting hoses.
3. Screw in the drainage opening **27** so that it comes out of the base of the filter vessel **6**.
4. Completely drain the water from the filter vessel **6** via the drainage opening.
5. Screw the drainage opening into the filter vessel.
6. Remove the locking ring **2** by unscrewing the wing nut **5** counterclockwise.
7. Put aside the locking ring and its screws.

8. Slowly turn the filter vessel on its head and remove the quartz filter sand or the filter balls.
9. Remove the divider .
10. Remove the screen .
11. Thoroughly rinse the divider and the screen under running water.
12. Rinse the filter vessel with clean water.
13. Insert the screen.
14. Insert the divider.
15. Carry out the steps described in the "Preparing the filter vessel" section.

The filter medium is exchanged.



Replacing the timer battery

1. Make sure that the pump's power cable is disconnected from the power supply.
2. Undo the screws of the timer cover with a Phillips screwdriver PH1 and remove the cover.
3. Lightly push down on one edge of the battery to loosen it. Remove the battery.
4. Replace the battery (see section "Technical data").
5. Screw the cover back on.

The timer battery is exchanged.

Cleaning

Only clean the device with a standard bathroom cleaner, clear tap water and a lint-free cloth. Aggressive cleaning agents can damage the device. Dry the device with a lint-free cloth.

Test

Check the following before each use:

- Is there visible damage on the device?
- Is there visible damage on the control elements?
- Are the accessories in perfect condition?
- Are all lines in perfect condition?
- Is the feed unblocked?
- Are the ventilation slots clear and clean?

Do not start up a damaged device or damaged accessories. Have them checked by the manufacturer or its customer service or a qualified service technician.

Storage

Winter storage



Store the filter system in a dry and frost-free place ($\geq +5\text{ }^{\circ}\text{C}$) away from direct sunlight. Always store the dried filter medium separately from the filter vessel over the winter.

1. Switch the pump **10** off by pulling the power plug.
2. Close the shut-off valves or block the water flow to the pool's connecting hoses.
3. Uninstall the connecting lines to the pool and drain the hoses.
4. Lift the pump and drain it via the two connections.
5. Drain the filter medium (see "Exchanging the filter medium").
If you are using filter balls, wash them by hand and let them dry completely. If you are using sand, pour the sand into a suitable container (e.g. bucket) and store this in a dry place.
6. Rinse the filter system with tap water.
7. Let the filter system dry completely.
8. Press and hold down the valve lever **35** on the valve head **1**.
9. Turn the valve lever to the "WINTER" position and let go.

The device can be stored over the winter.

Troubleshooting

Problem	Possible cause	Remedy
The pressure on the manometer exceeds 1 bar.	The quartz filter sand is dirty.	Backflush the system (see section "Backflushing").
	The filter balls are dirty.	Remove and wash the filter balls by hand. Exchange the filter balls if necessary.
Air bubbles escape from the injection nozzle.	The pump is sucking in air.	Check all hoses and gaskets for leaks. Retighten the hose clamps.
		Check the water level in the pool and fill in more water if necessary until the pool water covers the suction line connection completely.
The pump is not getting enough water or the system pressure is too low.	The water level in the pool is too low.	Raise the water level in the pool.
	The prefilter basket (if present) is clogged.	Empty the prefilter basket.
	The suction line is out of place or clogged.	Clean the pressure line.
The pump does not start up.	The pump has no power.	Connect the pump's power plug to the power supply. Check whether the fuse has tripped.
	The pump is defective.	Contact customer service.
The pump is not running.	The timer is set.	Press the timer button. The running time can be set when the pump is switched off. Turn on the pump.
	The external timer is set.	Check the running times on the external timer.
There is filter medium in the pool	Quartz filter sand was topped up.	Backflush the system until the water runs clear. See section "Backflushing".
	Defective screens in the filter vessel.	Check the screens for damage and replace if necessary.

If the problem cannot be solved, contact the customer service listed on the last page.

Technical data

Comfort 50

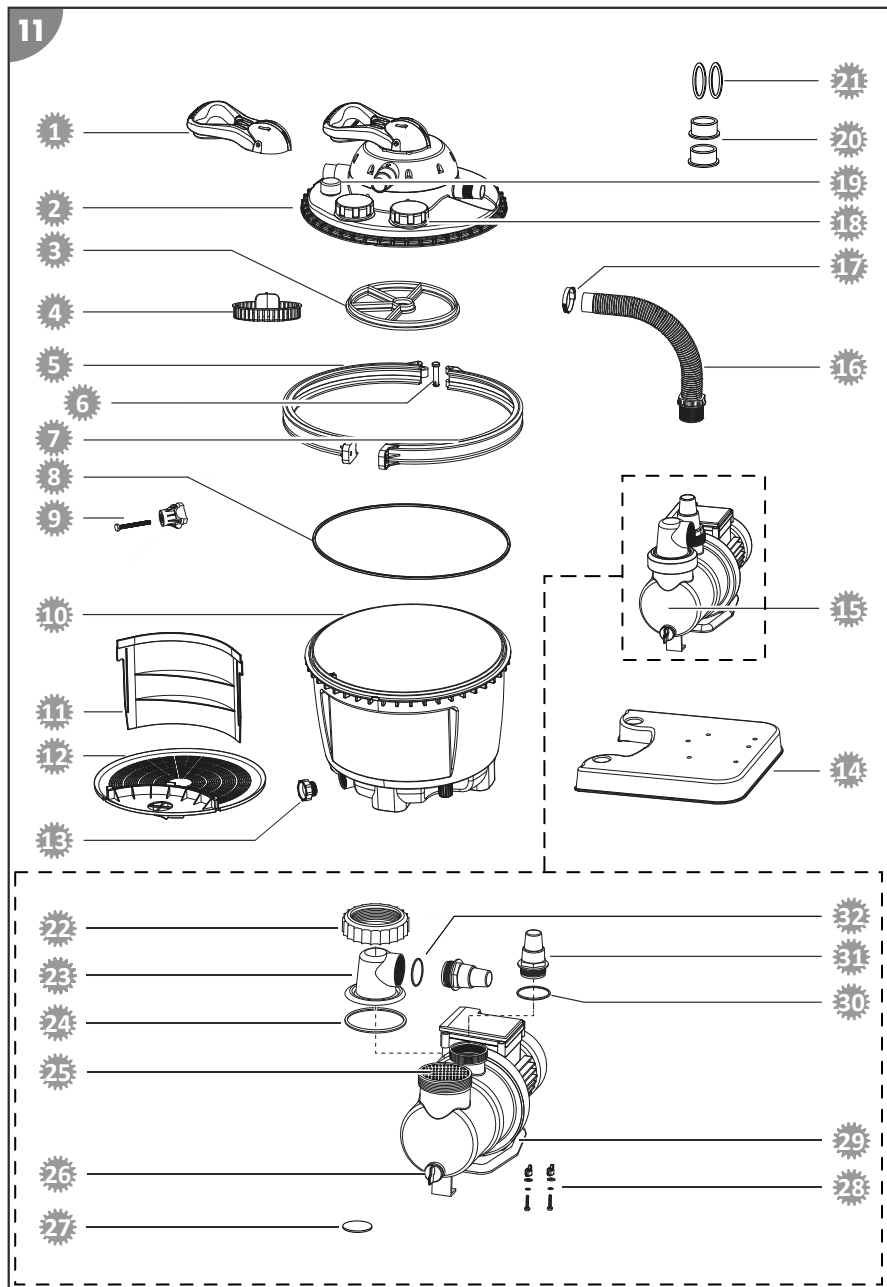
Model:	Comfort 50	Pump model:	SPS 75-1T
Item number:	040200	Pump item number:	040916
Vessel volume:	Ø 415 mm / approx. 25 l	Pump installation:	on base plate
Connection diameter:	Ø 32/38 mm (1.3/1.5 in)	Pump function principle:	self-priming
Design:	7-way valve with manometer	Pump timer:	integrated timer
Circulation rate:	max. 6,600 l/h (29.1 GPM)	Battery for timer:	button cell CR2032; Lithium 3V available
Pool volume (water content):	max. 33,000 l (8,700 gal)	Prefilter:	
Water temperature:	10 °C to 35 °C (50 °F to 95 °F)	Power supply:	220-240 V~, 50 Hz
Requirements on filter medium:		Output:	max. 450 W
Steinbach filter balls:	approx. 400 g	Flow rate:	max. 8,500 l/h (36.3 GPM)
Quartz filter sand:	approx. 15 kg; 0.7-1.2 mm; DIN EN 12904	Delivery head:	max. 9.0 m (29.5 ft.)

Comfort 75

Model:	Comfort 75	Pump model:	SPS 100-1T
Item number:	040100	Pump item number:	040917
Vessel volume:	Ø 415 mm / approx. 50 l	Pump installation:	on base plate
Connection diameter:	Ø 32/38 mm (1.3/1.5 in)	Pump function principle:	self-priming
Design:	7-way valve with manometer	Pump timer:	integrated timer
Circulation rate:	max. 7,800 l/h (34.3 GPM)	Battery for timer:	button cell CR2032; Lithium 3V available
Pool volume (water content):	max. 40,000 l (10,000 gal)	Prefilter:	
Water temperature:	10 °C to 35 °C (50 °F to 95 °F)	Power supply:	220-240 V~, 50 Hz
Requirements on filter medium:		Output:	max. 550 W
Steinbach filter balls:	approx. 700 g	Flow rate:	max. 9,400 l/h (36.3 GPM)
Quartz filter sand:	approx. 25 kg; 0.7-1.2 mm; DIN EN 12904	Delivery head:	10.0 m (32 ft.)

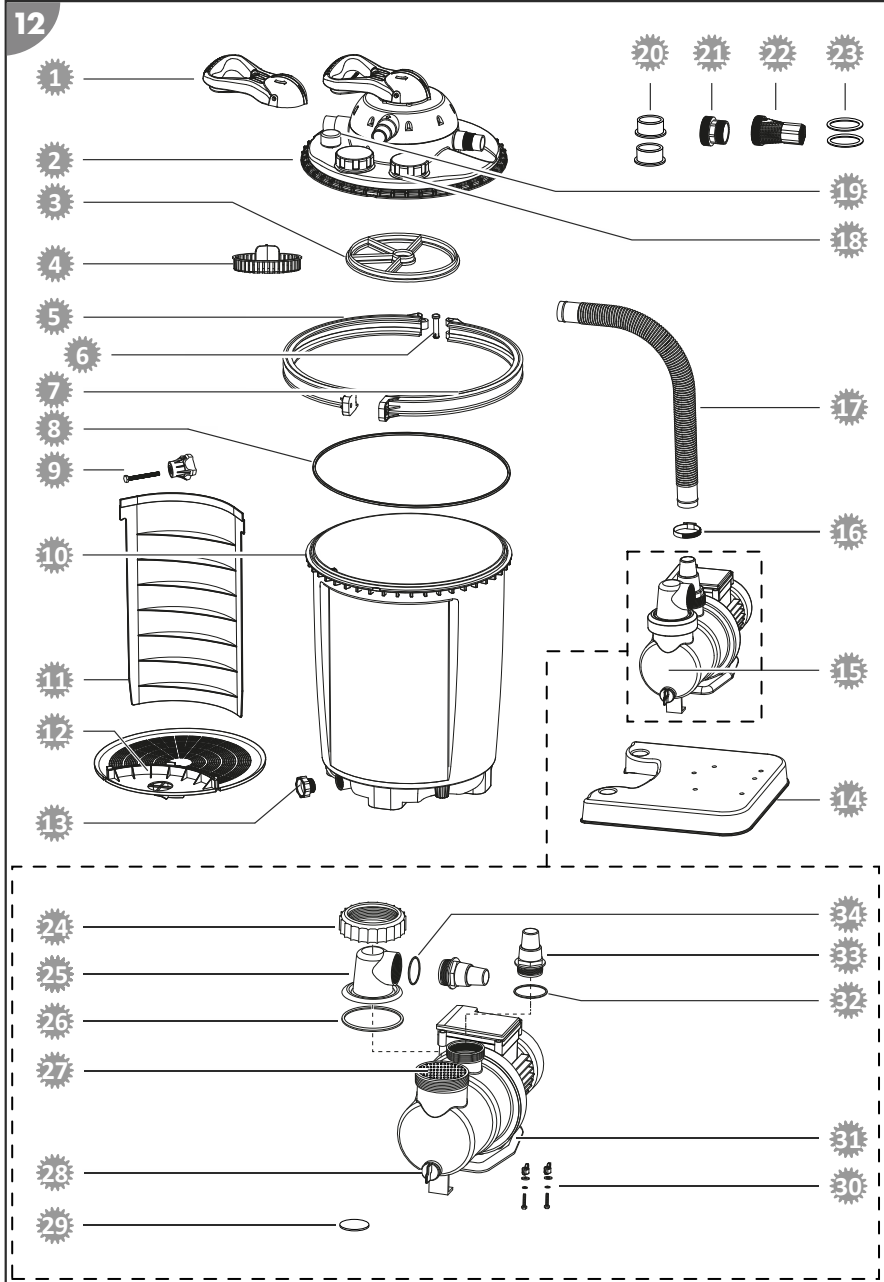
Spare parts

Comfort 50



- | | | | |
|-----------|--|-----------|--|
| 1 | 040818 - valve lever | 20 | 040834 - hose reducer |
| 2 | 040820 - directional control valve, blue | 21 | 0409331 - flat gasket for inlet and outlet hose (2x) |
| 3 | 040828 - spider gasket for the directional control valve | 22 | 040924 - threaded ring |
| 4 | 040816 - plate | 23 | 040911 - transparent prefilter cover |
| 5 | 040813 - right locking ring | 24 | 040930 - O-ring seal, large (Ø 79 mm) |
| 6 | 040811 - pin | 25 | 040927 - prefilter |
| 7 | 040812 - left locking ring | 26 | 040953 - drain screw incl. seal |
| 8 | 040814 - filter container seal | 27 | 040915 - 3 V CR2032 lithium battery for timer |
| 9 | 040810 - wing nut | 28 | 040978 - fastening kit for filter pumps |
| 10 | 040804 - filter vessel | 29 | 040950 - base plate |
| 11 | 040806 - divider | 30 | 040928 - O-ring seal, medium (Ø 54 mm) |
| 12 | 040801 - screen | 31 | 040841 - hose adapter |
| 13 | 040802 - drain screw for filter vessel, blue | 32 | 040926 - O-ring seal, small (Ø 45 mm) |
| 14 | 040800 - base plate | | |
| 15 | 040916 - filter pump SPS 75-1T | | |
| 16 | 040936 - connection hose L = 25 cm, Ø 38 mm | | |
| 17 | 040946 - hose clamp Ø 30 – 50 mm | | |
| 18 | 040906 - screw cover with gasket | | |
| 19 | 040909 - manometer 1/8" for Comfort series | | |

Comfort 75



- 1 040818 - valve lever
- 2 040820 - directional control valve, blue
- 3 040828 - spider gasket for the directional control valve
- 4 040816 - plate
- 5 040813 - right locking ring
- 6 040811 - pin
- 7 040812 - left locking ring
- 8 040814 - filter container seal
- 9 040810 - wing nut
- 10 040803 - filter vessel
- 11 040805 - divider
- 12 040801 - screen
- 13 040802 - drain screw for filter vessel, blue
- 14 040800 - base plate
- 15 040917 - filter pump SPS 100-1T
- 16 040946 - hose clamp Ø 30 – 50 mm
- 17 040923 - connection hose L = 48 cm, Ø 38 mm
- 18 040906 - screw cover with gasket
- 19 040909 - manometer 1/8" for Comfort series
- 20 040834 - hose reducer
- 21 040933 - adapter for INTEX pools
- 22 040934 - return line adapter for INTEX pools
- 23 0409331 - flat gasket for inlet and outlet hose (2x)
- 24 040924 - threaded ring
- 25 040911 - transparent prefilter cover
- 26 040930 - O-ring seal, large (Ø 79 mm)
- 27 040927 - prefilter
- 28 040953 - drain screw incl. seal
- 29 040915 - 3 V CR2032 lithium battery for timer
- 30 040978 - fastening kit for filter pumps
- 31 040950 - base plate
- 32 040928 - O-ring seal, medium (Ø 54 mm)
- 33 040841 - hose adapter
- 34 040926 - O-ring seal, small (Ø 45 mm)

Disposal

Disposing of the packaging

Sort the packaging before you dispose of it. Dispose of paperboard and cardboard with the recycled paper service and wrappings with the appropriate collection service.

Disposing of used appliances

Applicable in the European Union and other European countries with separate collection systems for recyclable materials.



Used appliances do not belong in the household waste!

If the device can no longer be used, each consumer **is obligated by law to drop off used appliances separate from the household waste** at a municipal collection point. This ensures that used appliances are recycled properly and negative effects on the environment are avoided. Therefore electrical appliances are marked with the above symbol.



Batteries and rechargeable batteries must not be disposed of in the household waste!

You, the consumer, are obligated by law to deposit all batteries and rechargeable batteries, regardless of whether they contain hazardous substances* or not, at a collection point in your community/your district or at a retailer so that these can be disposed of in an environmentally-friendly fashion.

* marked with: Cd = cadmium, Hg = mercury, Pb = lead, Li = lithium

© 2022 Steinbach International GmbH

Nachdruck oder Vervielfältigung (auch auszugsweise) nur mit Genehmigung der Steinbach International GmbH. Diese Druckschrift, einschließlich aller ihrer Teile, ist urheberrechtlich geschützt. Jede Verwertung außerhalb der engen Grenzen des Urheberrechts ist ohne Zustimmung der Steinbach International GmbH unzulässig und strafbar. Das gilt insbesondere für Vervielfältigungen, Übersetzungen, Mikroverfilmungen und die Einspeisung und Verarbeitung in elektronischen Systemen.

Vertrieben durch



Steinbach International GmbH

L. Steinbach Platz 1,
AT-4311 Schwertberg



helpdesk.steinbach.at



Produktinformationen/ Product information/ Informations relatives au produit/ Informazioni sul prodotto/ Informacije o izdelku/ Informații despre produs/ Informace o výrobku/ Informacije o proizvodu/ Termékinformáció/ Informácie o výrobku/ Продуктова информация/ Ürün bilgileri/ Informacje o produkcie/ Información sobre el producto

steinbach-group.com



Pool Control

Pool Control App



Ersatzteile/ Spare parts/ Pièces de rechange/ Parti di ricambio/ Nadomestni deli/ Piese de schimb/ Náhradní díly/ Zamjenski dijelovi/ Pótalkatrészek/ Náhradné diely/ Резервни части/ Yedek parçalar/ Części zamiennie/ Piezas de recambio

steinbach-group.com/de/ersatzteile